

SHIELDER 60

CELEBRATING 60 YEARS OF INTERNATIONAL EXCELLENCE

HALL OF HONOR AWARDS
THURSDAY, OCTOBER 15, 2009

**HILTON HAWAIIAN VILLAGE
BEACH RESORT & SPA**

SPONSORED BY

HawaiiBusiness
m a g a z i n e

PROGRAM

6:30 p.m. OPENING PERFORMANCE

University of Hawai'i at Mānoa Drumline
Hawaiian Blessing by Kumu Edward Collier
Candes Meijide Gentry

6:50 WELCOME

Mistress of Ceremonies: Barbara Tanabe, Ho'ākea Communications

OPENING REMARKS

V. Vance Roley, Dean, Shidler College of Business

7:10 DINNER

PRIZE GIVEAWAYS

8:10 PROGRAM

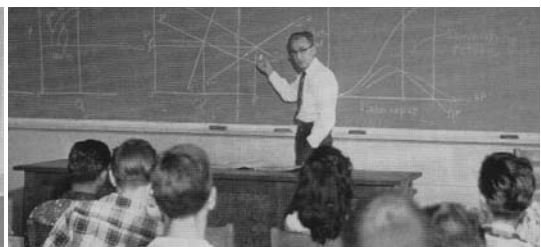
Class of '52 & '53

Shidler 60th Historic Video

2009 Hall of Honor Awards Presentation

- **Howard Hamamoto (BBA '53)**
President, Quarters, Inc.
- **Virginia Pressler, MD, FACS, (MBA '74)**
Executive Vice President and Chief Strategic Officer, Hawaii Pacific Health
- **Victor Lim (BBA '73, MBA '75)**
President, LWD, Inc., dba McDonald's®
- **Ross Murakami (BBA, '87)**
Founding Partner, KMH LLP

9:15 CLOSING



MESSAGE FROM THE DEAN



Aloha,

Welcome to the 60th Anniversary Shidler College of Business Hall of Honor Awards. On behalf of our Shidler 'ohana, I would like to extend my gratitude for your continuous support and participation in this very special evening.

Tonight we are excited to share six decades of our people and programs. We will begin the formal part of this evening's program with the introduction of our first graduating classes of 1952 and 1953, followed with a special historical video of the College honoring our alumni. We will conclude with the induction of four exceptional alumni into the College's Hall of Honor. Our honorees this year are: Howard H. Hamamoto, President, Quarters, Inc.; Virginia Pressler, Executive Vice President and Chief Strategic Officer, Hawai'i Pacific Health; Victor Lim, President, LWD, Inc., dba McDonald's®; and Ross Murakami, Founding Partner, KMH LLP.

All of the alumni we honor tonight exemplify the core values of the Shidler College of Business: hard work, strong leadership, community service and a commitment to education. Together, they will join over 26,000 Shidler alumni worldwide, making tremendous contributions to their companies and communities.

Throughout the 2009-2010 school year, we will showcase our alumni and programs at all College events in commemoration of our 60th anniversary. Please visit our new Shidler60.com website for more information on upcoming events.

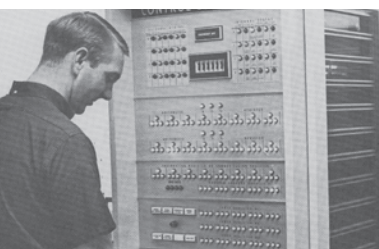
Once again, I would like to thank the nearly 55 class representatives for their help in making this year's Hall of Honor event a success, our title sponsor Hawaii Business and the 60th Anniversary steering committee members, Jay Shidler, Robin Campaniano, Howard Hamamoto, and Barbara Tanabe for their outstanding support and guidance.

The funds raised this evening will support the Shidler College of Business Alumni Association's pledge of \$200,000 along with matching support from Shidler Matching Gift Funds, to establish a \$400,000 scholarship endowment for the next generation of business leaders.

Please enjoy tonight's program as we reminisce over the past 60 years through music, pictures, and a special 60th commemorative historical video of the College.

Sincerely,

V. Vance Roley
V. Vance Roley



TITLE SPONSOR



Aloha and congratulations to the 2009 Hall of Honor inductees!

Several years ago *Hawaii Business* published an article “What School You Went?” discussing the high school affiliations of leaders of the Top 250 companies. On further analysis, the article might have focused on their college affiliation: over 30% of the senior executives of Hawai'i's Top 250 companies are graduates of the University of Hawai'i, many from the Shidler College of Business.

During the past 60 years, the Shidler College has been the preeminent organization responsible for training and delivering leaders to the Hawai'i business community. As we are reminded at each Hall of Honor Awards dinner, the list of Shidler alumni represents top leaders from all sectors of our community, including Robert Clarke, Richard Ha, Dee Jay Mailer, Jay Shidler, Robin Campaniano, David Heenan, Susan Au Doyle, Eddie Flores, Barry Taniguchi, and so many others.

This year's Hall of Honor inductees on the special 60th anniversary of the founding of the College are no different. On behalf of everyone at *Hawaii Business* magazine, we congratulate Howard Hamamoto, Dr. Virginia Pressler, Victor Lim and Ross Murakami on joining the ranks of Hall of Honor awardees. Mahalo for your hard work and commitment to business excellence, and for making Hawai'i a better, more prosperous place to live.

Congratulations also to the Shidler College for your tremendous achievements over the past 60 years, and for consistently being named among the top business schools in the nation. We also want to extend a very special mahalo to the staff of the college, who have worked so hard to create such a special event this evening.

Mahalo nui loa,

David Tumilowicz

David Tumilowicz, publisher
Hawaii Business



HOWARD H. HAMAMOTO (BBA '53)

President, Quarters, Inc.



Howard H. Hamamoto, former president of Amfac Properties, currently splits his time between his real estate development and investment holdings, chairing fundraising events and serving on community boards.

After receiving his BBA from the Shidler College of Business at the University of Hawai'i at Mānoa, Hamamoto began honing his management skills in banking, finance, real estate and land management. He served 9 years at Bank of Hawai'i as a credit officer and branch manager. In 1964 Hamamoto joined Amfac to help establish its Financial Services division. Subsequent to serving as the division's president, he went on to manage all of Amfac's vast property holdings and extensive real estate development, including the Ka'anapali Resort on Maui.

Under Hamamoto's tenure, Amfac developed long range planning for the conversion of agricultural zoned lands into urban zoning which were ultimately converted for residential and commercial development.

A third generation Japanese-American, Hamamoto is committed to serving his community. He serves as chairman of the Crown Prince Akihito Scholarship Foundation and recently hosted the 50th Anniversary celebration of its founding which was attended by Their Majesties, the Emperor and Empress of Japan.

He is also the past president of the Japan-America Society of Hawai'i and currently serves as its director. He is currently president of the Maunalani Foundation and Nursing Center and has served as trustee of the University of Hawai'i Foundation from 1986 – 1998. He is also a member of the Shidler College of Business 60th Anniversary Steering Committee.



VIRGINIA PRESSLER MD, MBA, FACS (MBA '74)

Executive Vice President and Chief Strategic Officer,
Hawai'i Pacific Health



Virginia Pressler is executive vice president and chief strategic officer for Hawai'i Pacific Health, a non-profit healthcare network that includes Kapi'olani Medical Center for Women & Children, Straub Clinic & Hospital, Pali Momi Medical Center, and Wilcox Hospital & Kauai Medical.

Dr. Pressler started her career in business right out of college as a management trainee at Bank of Hawai'i. She enrolled in the MBA program at the Shidler College of Business to further her business knowledge, graduating with honors. In 1976, she left banking to pursue a career in medicine.

Today, Dr. Pressler relies on both her business and medical background as chief strategic officer for Hawai'i Pacific Health and is responsible for specialty service line development, philanthropy, and government relations. She also serves as president and chair of HPH Partners, the subsidiary of Hawai'i Pacific Health that oversees all joint ventures.

Previously, Dr. Pressler was deputy director of the Hawai'i State Department of Health, president & CEO of the Premier Plan, vice president at The Queen's Health Systems, director of Surgical Education and associate professor of surgery at the John A. Burns School of Medicine, and operated a private practice in general surgery.

Dr. Pressler has been involved with the American Cancer Society for more than 20 years serving as past president of the Hawai'i Pacific Division and a National Assembly Delegate for the American Cancer Society. She is a commissioner on the Statewide Health Coordinating Council and has served on several state commissions and task forces. Some of her notable accomplishments include the initiation of the Tobacco Trust Fund, the Healthy Hawai'i Initiative, the Hawai'i Uninsured Project, and the Hawai'i Comprehensive Cancer Control Program.

Dr. Pressler has received numerous awards, including those from the American Cancer Society, Planned Parenthood, Hawai'i Medical Association, Healthcare Association of Hawai'i, YWCA, and others.

Dr. Pressler grew up on Maui, holds a Bachelor of Arts degree from Cornell University, and an MBA, MS in physiology, and MD degrees from the University of Hawai'i at Mānoa.



VICTOR LIM (BBA '73, MBA '75)

President, LWD, Inc., dba McDonald's®



Victor Lim is owner and operator of seven of Hawai'i's most successful McDonald's franchises.

Born in Burma (Myanmar), Lim moved with his family to Thailand at the age of 13. He moved to Hawai'i to attend college in 1969, graduating from the Shidler College of Business at the University of Hawai'i at Mānoa with a BBA in marketing in 1973 and an MBA in 1975.

Throughout his college years, Lim worked in diverse jobs eventually joining McDonald's of Hawai'i in 1974 as a management trainee. For 14 years, Lim worked in various positions for McDonald's rising to operations manager for the Asia Pacific region.

In 1987, he left the McDonald's corporate world to become a McDonald's franchisee and today owns and operates seven restaurants in Hawai'i located at Fort Street Mall, Dole Cannery, Ala Moana Shopping Center, Discovery Bay, Waimanalo, Enchanted Lake, and Kailua.

Over the years, Lim has received many awards and recognitions from McDonald's including the coveted Golden Arch Award given out once every two years as the highest McDonald's franchisee honor. Lim was one of 12 in the U.S., out of 3,000 plus, to receive the award.

In 2006, Lim and a group of McDonald's franchisees of Asian heritage helped form APIASF (Asian Pacific Islander Scholarship Fund), the first national scholarship program to benefit people of Asian and Pacific Islander heritage. He is also currently co-chairing the capital campaign for the Chinese Chamber of Commerce of Hawai'i and last year co-chaired the fundraising efforts in Hawai'i for victims of cyclone Nagris in Myanmar. Lim is also the immediate past chair for the Hawai'i Restaurant Association and was recently elected to serve on the board of the National Restaurant Association. Lim is also the chair for the Fort Street Mall Business Improvement District.

In 2008, Lim was named the "Citizen of the Year" by the United Chinese Society of Hawai'i and was presented with the Small Business of Hawai'i's Civic Leader Award.



ROSS MURAKAMI (BBA '87)

Founding Partner, KMH LLP



Ross R. Murakami is a partner in KMH LLP, a Hawai'i firm that specializes in delivering audit, tax, risk management, accounting and business consulting services.

Murakami began his public accounting career in 1987 with Arthur Andersen, where he became the first locally hired professional to become a partner. In 2002, Murakami, together with Peter Hanashiro and Randy Karns, made the decision to sever ties with Andersen by purchasing the Hawai'i practice. This resulted in the only Andersen office in the country where an entire practice remained intact.

Their philosophy was to build a firm that was locally owned and managed, with the level of quality provided by the best firms in the country. Since then, KMH added four partners from other national accounting firms, growing to be one of Hawai'i's largest professional services firms. Many of Hawai'i's largest public and private organizations are among their clients.

Over his career, Murakami has been committed to giving back to the community through his support of youth and education programs. Having been a Boy Scout as a youth, he recognized the life and leadership skills that he developed through that experience and has been an active supporter of scouting. He currently serves as president of the Aloha Council Boy Scouts of America. This scouting program includes nearly 20,000 youth throughout Hawai'i and the Pacific Basin.

Murakami is a member of the UH School of Accountancy Advisory Board and the Shidler College of Business Advisory Council, and has been a generous supporter of the College. He also serves as one of Hawai'i's representatives on the American Institute of Certified Public Accountants and is a board member and past president of the Hawai'i Society of Certified Public Accountants.

Murakami is married to Shidler accounting alumna Dayle and together they have two children Connor and Cameryn.



SHIDLER60 STEERING COMMITTEE

Jay Shidler (BBA '68), Founder and Managing Partner, The Shidler Group
Robin Campaniano (EMBA '83), President and Chief Executive Officer, AIG Hawai'i
Howard Hamamoto (BBA '53), President, Quarters, Inc.
Barbara Tanabe (EMBA '83), Owner and Partner, Ho'ākea Communications, LLC

CLASS REPRESENTATIVES

1956/57 Pearl Johnson
1958 Oswald Stender
1964 Joseph M. Magaldi
1965 Rodney Shinkawa
1970 Eddie Flores
Gary Nishikawa
1972 Howard Todo
Alvin Wong
1978 Cindy Alm
Anne Takabuki
Jean Tsukamoto
Kent Tsukamoto
1984 Terri Fujii
Jenny Teruya
1987 Kirk Horiuchi
1989 Brian Walker
Eric Yeaman
1991 Verna Wong
1992 Patrick Oki
1994 Melanie King
1996 Jerry Linville
1997 Dave Matlin
1998 Linda Kyriannis
Mikio Sato
2000 Alex Smith
2003 Tyson Yamada
2004 Jon Paul Akeo
Cory Nakamura
2005 Enriqueta Tanaka
2007 Toni Mingo
Heather Yanazaki

Executive MBA Class Representatives

EMBA 1 Leonard Kamp
EMBA 2 Arnold Kishi
EMBA 3 Robert Lee
Eve Lynn Shere
EMBA 6 Paul Higo
EMBA 8 Janis Akuna
Sheila Gold
Richard Louis
EMBA 9 Shar Chun-Lum
EMBA 10 King Tang
EMBA 11 Sandra Fong
Jodi Nakamura
EMBA 12 Sally Little
EMBA 13 Douglas Inouye
Davin Kazama
EMBA 14 Jon Lim
EMBA 15 Brad Nicolai
Cathy Tanaka
EMBA 16 Terrence George
Christopher Letoto
Christine Murphy



SPONSORS AND CLASS GIFT

Mahalo to the sponsors of the 2009 Hall of Honor Awards. Funds raised tonight will benefit the Shidler College of Business Alumni Association Endowed Scholarship Fund.

TITLE SPONSOR

HawaiiBusiness

PLATINUM TABLE SPONSORS



The Shidler Family Foundation

GOLD TABLES

AIG Hawaii
Hawaiian Telcom
Howard & Joanne Hamamoto Family (2)
McDonald's Golden Arches Merchants
Association
McDonald's Restaurants of Hawaii
Stanford Carr

SILVER TABLES

Accuity LLP/Kent & Jean Tsukamoto
Tung Bui
John Butler
Deloitte & Touche LLP (2)
First Hawaiian Bank
Hawaiian Airlines
HMSA
KMH LLP
Meadow Gold Dairies
Montgomery Pacific Outsourcing
Ross & Dayle Murakami
Unicold Corporation



STANDARD TABLES

1980s Alumni
 American Savings Bank
 Barbara Tanabe/Ho'akea Communications
 Boland/Arakaki
 Chinese Chamber of Commerce of Hawaii (2)
 City Mill Company, Ltd.
 Communications Pacific/MVNP
 DataHouse/HiBroadcast
 David Heenan
 Ernst & Young (2)
 ESPN 1420
 Executive MBA Class 1
 Executive MBA Class 8
 Executive MBA Class 11
 Wes Segawa/Executive MBA Class 13
 Executive MBA Class 15
 Hawaii Dental Service/Oceanic Time Warner
 Hawaii Student Suites

Hawaiian Electric Company
 Howard Todo (2)
 Island Insurance Company, Limited
 Japan-America Society of Hawaii
 John A. Burns School of Medicine
 Kamehameha Schools
 Master of Human Resource Management (MHRM)
 Alumni & Friends
 Oz Stender
 Starwood Hotels & Resorts/Kyo-ya Hotels & Resorts
 The MacNaughton Group
 UHAA
 University of Hawaii and University of Hawaii
 Foundation
 Victor & Anita Lim Family (3)
 Wikoff Combs & Co., LLC
 Young Brothers

CLASS GIFTS

1950 Herbert Marutani, BBA 1953
 Ernest Young, BBA 1953
1960 Alvin Narimatsu, BBA 1965
1970 Helen W.L. Chang, BBA 1979
 David Chung, MBA 1970
 A. Jerome Dupont, EMBA 1979
 Robert Hamilton, BBA 1969, MBA 1970
 Alan Hayashi, EMBA 1979
 Leonard Kamp, EMBA 1979
 Phil Kinnicutt, EMBA 1979
 Stephen Lee, EMBA 1979
 Frederick Lins, EMBA 1979
 Jay Voss, EMBA 1979
 Sharon Weiner, MBA 1975
 Paul Yamashita, EMBA 1979
1980 Susan Doyle, MBA 1982
 Chuck Hill, EMBA 1983
 Andrew Kawano, BBA 1982
 Peter K.W. Lee, BBA 1991
 Sandra Moriku-Shiu, BBA 1982
 Gary Oda, BBA 1988
 Steven Sakata, BBA 1989
 Glenn Shizumura, BBA 1985
 Doug Tonokawa, BBA 1979, MACC 1981
1990 Janis Akuna, EMBA 1994
 Marsha Bolson, EMBA 1994
 Paula Chang, BBA 1991
 Sheila Gold, EMBA 1994
 Wendell Kakigi, BBA 1985, EMBA 1994
 Dana Kunimoto, EMBA 1994
 Linda Kyriannis, BBA 1998
 Richard Louis, EMBA 1994

2000 Steve Sombrero, EMBA 1994
 Cathy Tanaka, BBA 1991
 Jon Paul Akeo, MHRM 2004
 Jocelyn Apo, BBA 2000
 Jennifer Barrett, EMBA 2007
 Kimberly Brooks, MHRM 2007
 John Delong, EMBA 2000
 Michael Doss, EMBA 2007
 Chenoa Farnsworth, EMBA 2000
 Jodi Hashimoto, EMBA 2000
 Malcolm Inamine, BBA 1994, EMBA 2000
 Isaac Kaopua, MHRM 2007
 Toni Kruse Mingo, MHRM 2007
 Marc Kup, EMBA 2007
 Brad Nicolai, EMBA 2007
 Jonathan Ostil, EMBA 2007
 Janis Reischmann, EMBA 2000
 Jill Reppun, EMBA 2007
 Bruce Ushijima, EMBA 2000
 Judith Wong, MBA 2000
 Greg Young, EMBA 2007
Friends Peter Backus
 Sachi Braden
 Hausen Chang
 Edwin Hawkins, Jr.
 Manu Kaiama
 Kori-Jo Kochi
 Marie Kumabe
 Ron Quizon
 Allen Uyeda
 Rick Varley
 Karen Zee



ABOUT THE HALL OF HONOR AWARDS & PAST RECIPIENTS

Each year since 1992, the Shidler College of Business at the University of Hawai'i at Mānoa presents accomplished alumni and business professionals with the College's highest tribute—the Shidler College of Business Hall of Honor Award. This award recognizes an individual who has distinguished themselves through their profession, community, and commitment to higher education. Funds raised from the event have benefitted the Shidler College of Business Alumni Association Endowed Scholarship Fund. Below is a list of past recipients of this prestigious award.

YEAR	NAME	TITLE AND COMPANY AT TIME OF AWARD
2008	Robert Clark Richard Ha Paul Higo Richard Leung	Retired Chairman, President & CEO of Hawaiian Electric Industries President & Founder of Hamakua Springs Country Farms Managing Partner of Deloitte & Touche LLP Managing Director & Head of Wealth Management of UBS Securities Company LTD., China
2007	Terri Fujii William R. Johnson, Jr. Jean Rolles	Managing Partner, Ernst & Young LLP, Honolulu President & CEO, Johnson Machinery Company Vice President, Community Affairs Outrigger Enterprises Inc.
2006	Walter A. Dods, Jr. David A. Heenan Jay H. Shidler	Chairman, First Hawaiian Bank and BancWest Corporation Trustee, Estate of James Campbell Founder and Managing Partner, The Shidler Group
2005	Susan Au Doyle Eddie Flores, Jr. Tertia Freas	President and Chief Professional Officer, Aloha United Way Founder, L&L Drive-Inn Audit Partner, Deloitte & Touche LLP
2004	T.C. Chan Jim Hassett Dee Jay Mailer Hideo Noguchi	Country Officer, Citigroup Taiwan Area Managing Partner, Ernst & Young, Chicago CEO, The Kamehameha Schools Founder and CEO, Noguchi & Associates Inc.
2003	Frederick D.S. Choi Ronald K. Migita Kathy Smith	Dean, Undergraduate College, Vice Dean, NYU Stern School of Business President and CEO, CB Bancshares Inc. President and Business Owner, Kathy Smith Fitness
2002	Barry K. Taniguchi Nonie Toledo Keith Vieira	President and CEO, KTA Super Stores and K. Taniguchi Ltd Vice President and General Manager, Sprint Hawaii Senior Vice President, Director of Operations for Hawaii and French Polynesia for Starwood Hotels & Resorts Worldwide Inc.



2001	William S. Chee Daniel Bow Tan Lau Robert J. Fishman Linsu Kim	Owner, President and CEO, Prudential Locations Chairman of the Board, CEO and Director of Grand Pacific Life Insurance Company CEO, Hawaii Tourism Authority Professor of Management, Korea University
2000	Evelyn Kuniyoshi Eric Miyasaki Sharon Weiner	Director, Human Resources, Pacific Internet Exchange Corp. President and CEO, Nissan Motor Corp., Hawaii Ltd. Group Vice President of Administration, DFS Hawaii
1999	Brenda Lei Foster Lloyd M. Fujie Frank H. Watase	Executive Assistant, Governor's Office, State of Hawai'i Managing Partner, Deloitte & Touche LLP Chairman and President, Quality! Naturally Foods Inc. and Owner and Chairman, Yum Yum Donut Shops Inc.
1998	Robin K. Campaniano Gary Hanagami, Jr. David H. McCoy Jack E. Myers Thomas A. Wellman	President and CEO, AIG Hawaii Insurance Company Customer Business Manager, Kraft Foods-Hawaii CEO, The Estate of James Campbell Chairman and Chief Executive Officer, The Myers Corporation Controller and Assistant Treasurer, Alexander & Baldwin Inc.
1997	Warren Haruki Lawrence M. Johnson Howard H. Karr	President, GTE Hawaiian Tel Chairman and CEO, Bancorp Hawaii Inc. Vice Chairman, Chief Financial Officer, and Treasurer, Administration and Finance Group, First Hawaiian Bank
1996	Kan Jung Luke Hal Oishi Barbara Tanabe	Chairman, Hawaii National Bank Retired Partner, Coopers & Lybrand LLP Managing Director, Honolulu Consulting Group
1995	Joan Diamond Rodney Shinkawa Howard Todo	Vice President of Human Resources, Hawaiian Electric Company President, First Federal Savings & Loan Audit Partner, Ernst & Young LLP
1994	Oswald Stender Kent Tsukamoto Heidi Wild	Trustee, Kamehameha Schools/Bernice Pauahi Bishop Estate Tax Partner, Coopers & Lybrand CPAs Director of Marketing Operations, BHP Petroleum Americas
1993	Thomas Kappock Hawaii Gary Nishikawa Lily Yao	Vice Chairman, Bank of Hawaii and Executive Vice President Bancorp Partner, Deloitte & Touche LLP President and CEO, Pioneer Federal Savings Bank
1992	Clement Judd, Jr. C. Dudley Pratt, Jr. Manuel Sylvester	President, Hawaii Hotel Association (posthumous award) Trustee, The Estate of James Campbell Managing Partner, Coopers & Lybrand



ACKNOWLEDGEMENTS

Barbara Tanabe
Candes Meijide Gentry
Cardinal Mailing Services, Inc.
Carino Studios
Peter and Darleen Dyer
David Bess
Electric Pencil
Entrepreneurs Club
Fish Scholars
GBSA
Hawaii Business Magazine
Hawaii Tents & Events
Hawaiian Chip Company
Hilton Hawaiian Village Beach Resort
& Spa
JN Automotive/ Brad Nicolai
Kumu Edward Collier

Les Saisons
Mike and Deborah Washofsky
Party Pizzazz
ProForma Favorable Impressions
PSAV Presentation Services
Service Printers Hawaii, Inc.
Shidler College of Business staff
Shidler60 Steering Committee
Stanley Ito Florist
The Honolulu Star-Bulletin
Tyson Yamada
University of Hawai'i Drumline
University of Hawai'i Information
Technology Services
Victor Lim/McDonald's®
Wall-to-Wall Studios, Inc.
Xerox

A special mahalo to the executive team, steering committee members, class representatives and volunteers who made this event possible.

BOARD OF DIRECTORS

OFFICERS

President, Jerry Linville (MBA '96)
Vice President, Kirk Horiuchi (BBA '87)
Secretary, Cynthia Alm (BBA '78)
Treasurer, Allison Toma (BBA '94)
Immediate Past President, Cory Nakamura (BBA '04)

DIRECTORS

Jon Paul Akeo (MHRM '04)
Jared Au (BBA '03, MACC '04)
Kellan Briones (MACC '05)
Casey Ching (MBA '06)
Chessa DeCambrá (MBA '05)
Randal Ikeda (BBA '84)
Arnold Kishi (EMBA '81)
Jeffrey Lau
Joseph Magaldi, Jr. (BBA '64)
David Matlin (MBA '97)
Sanford Morioka
Philip Mow (BBA '78)

Christine Murphy (EMBA '09)
Jodi Nakamura (EMBA '00)
William Pieper (MBA '04)
Lillian Rodolfich (BBA '87, EMBA '05)
Jeffrey Sakai (MBA '05)
Ryan Suekawa (BBA '04)
Toby Tamaye (BBA '95)
Enriqueta Tanaka (MBA '05)
Brian Walker (BBA '89)
Tyson Yamada (BBA '03, MBA '07)
Heather Yanazaki (BBA '07)

SHIDLER COLLEGE
OF BUSINESS

ALUMNI
ASSOCIATION



HawaiiBusiness m a g a z i n e

Congratulations to the
SHIDLER COLLEGE OF BUSINESS
for 60 years of excellence, and to the
Hall of Honor Awardees!



Turn to Hawaii Business magazine throughout the year to find out which companies are Hawaii's largest, which ones are the Best Places to Work, and who the current and emerging business leaders are in Hawaii. Each month delivers in-depth reporting on big issues as well as useful information to run your business better.

Please fill out the form below and fax to 537-6455 to receive 12 issues for \$15 (save 70% off the newsstand rate \$49.88), or better yet request your FREE subscription for members of the Shidler College Alumni Association.

Name ^		
Company ^		
Address ^		
City ^	State ^	Zip ^
Phone ^		E-mail ^

☐ Bill Me

☐ I am a Shidler Alumni Association member

ABOUT THE UNIVERSITY OF HAWAII AT MĀNOA SHIDLER COLLEGE OF BUSINESS

Established in 1949 as the College of Business Administration, the College was named in 2006 after alumnus Jay H. Shidler, founder and managing partner of The Shidler Group. The Shidler College of Business is renowned for its expertise in international management education and is consistently ranked among the nation's top 25 graduate schools for international business by *U.S. News & World Report*. Long recognized for its Asia-Pacific focus, the College is a professional school, offering a wide variety of degree, certificate and executive programs. The College places a strong emphasis on the development of management skills, entrepreneurship and the management of business information technology. The UH Shidler College of Business is the only graduate program in the State of Hawai'i accredited by AACSB International.

UNIVERSITY OF HAWAII AT MĀNOA
 SHIDLER COLLEGE OF BUSINESS
• International Excellence •

FOR MORE INFORMATION PLEASE VISIT SHIDLER60.COM